

www.gree-iran.com

Rev. A

Gree Wifi App Configuration

App : GREE+



Download App from Playstore or AppStore :

Search : Gree+

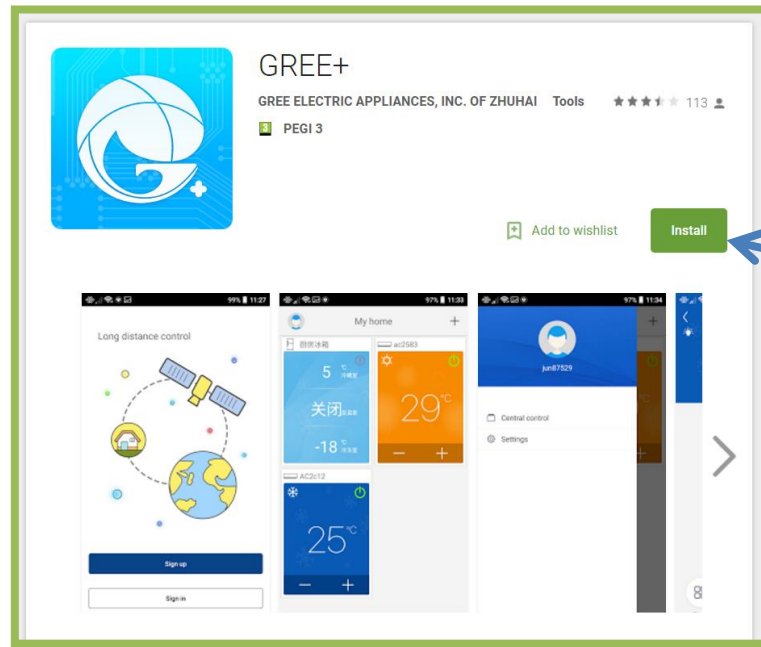
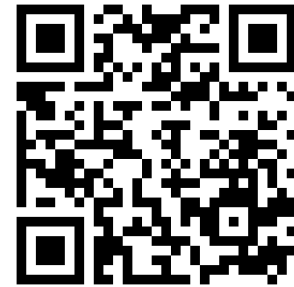
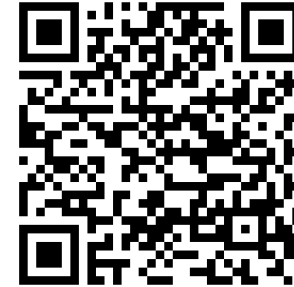
or

Playstore :

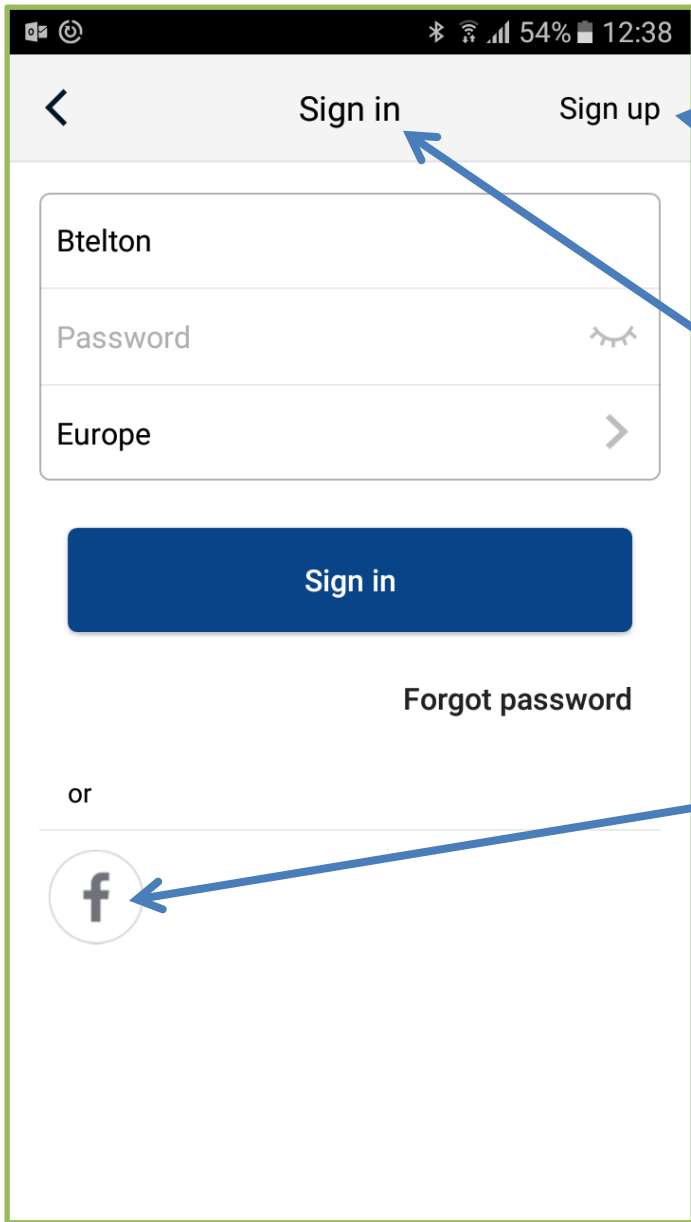
<https://play.google.com/store/apps/details?id=com.gree.greeplus>

Appstore:

<https://itunes.apple.com/us/app/gree/id1167857672?mt=8>



INSTALL



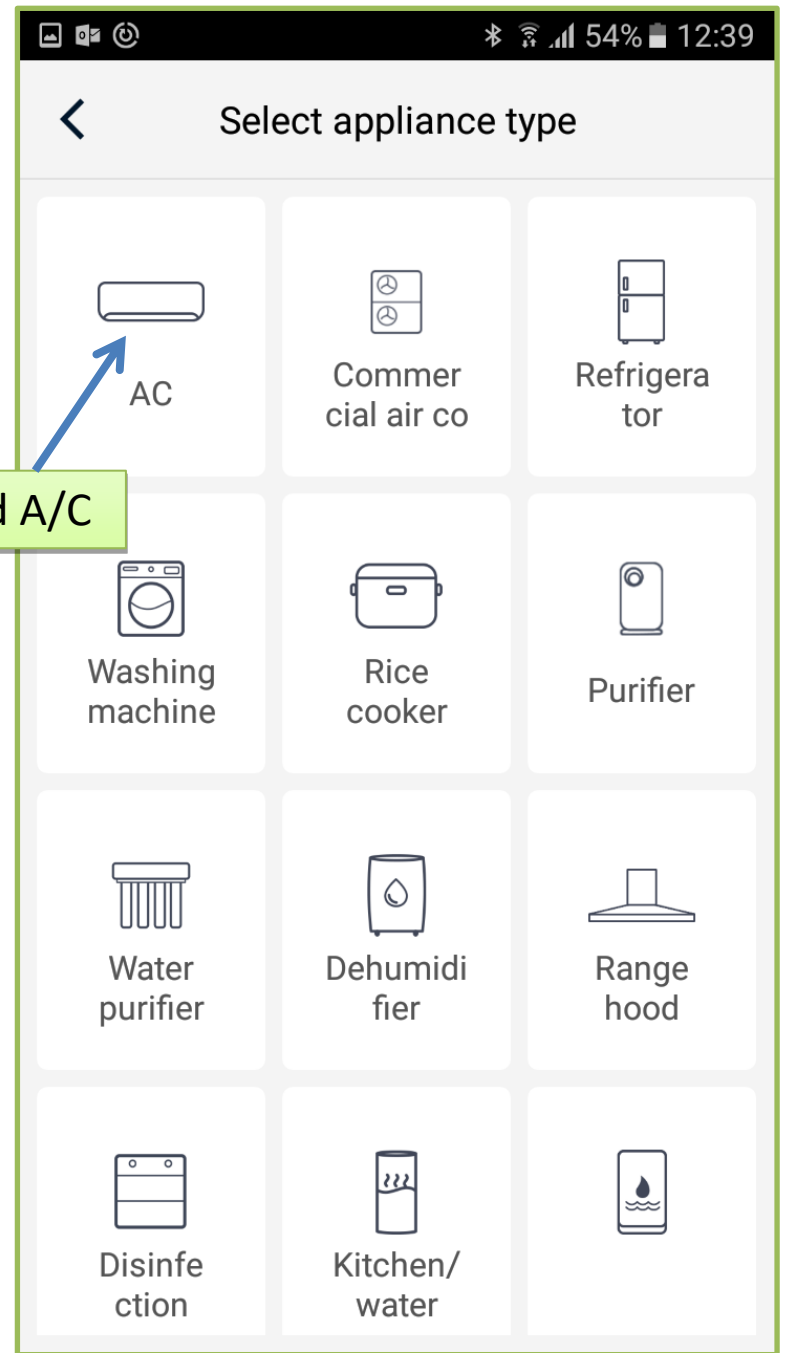
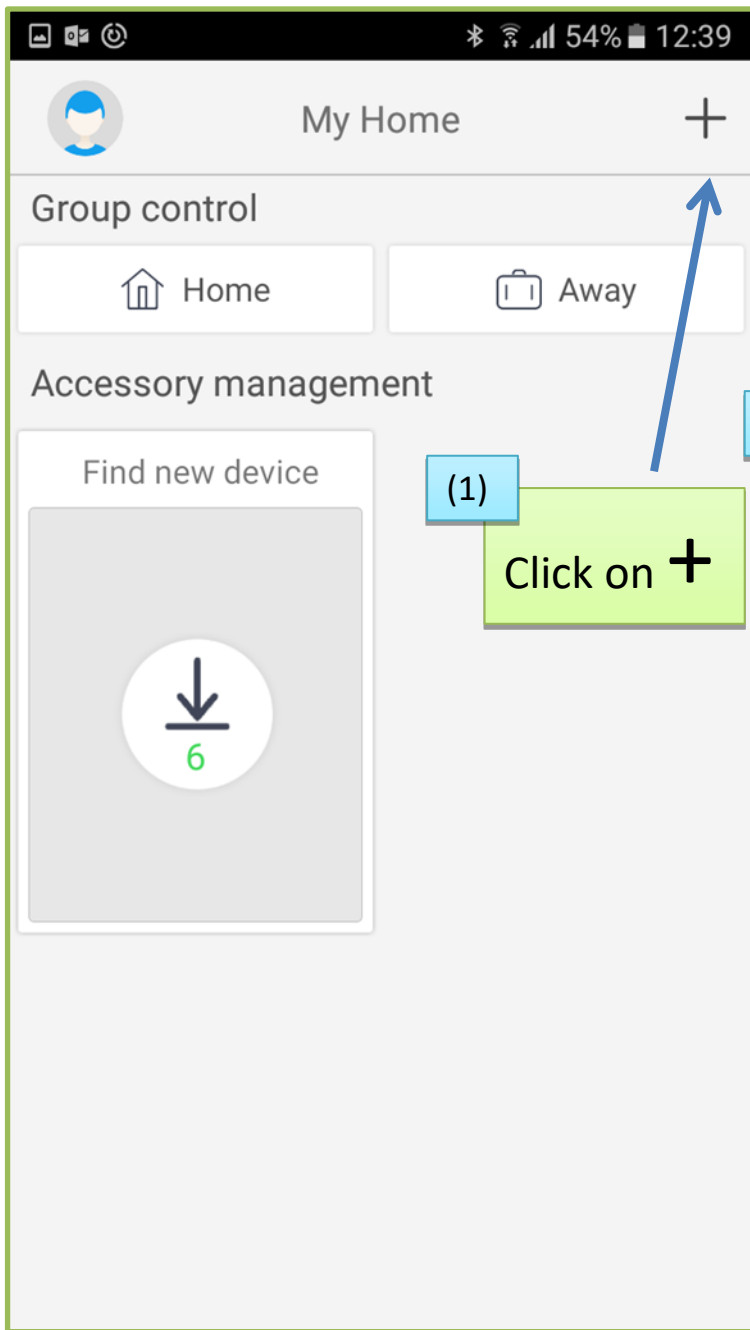
Sign up if New User

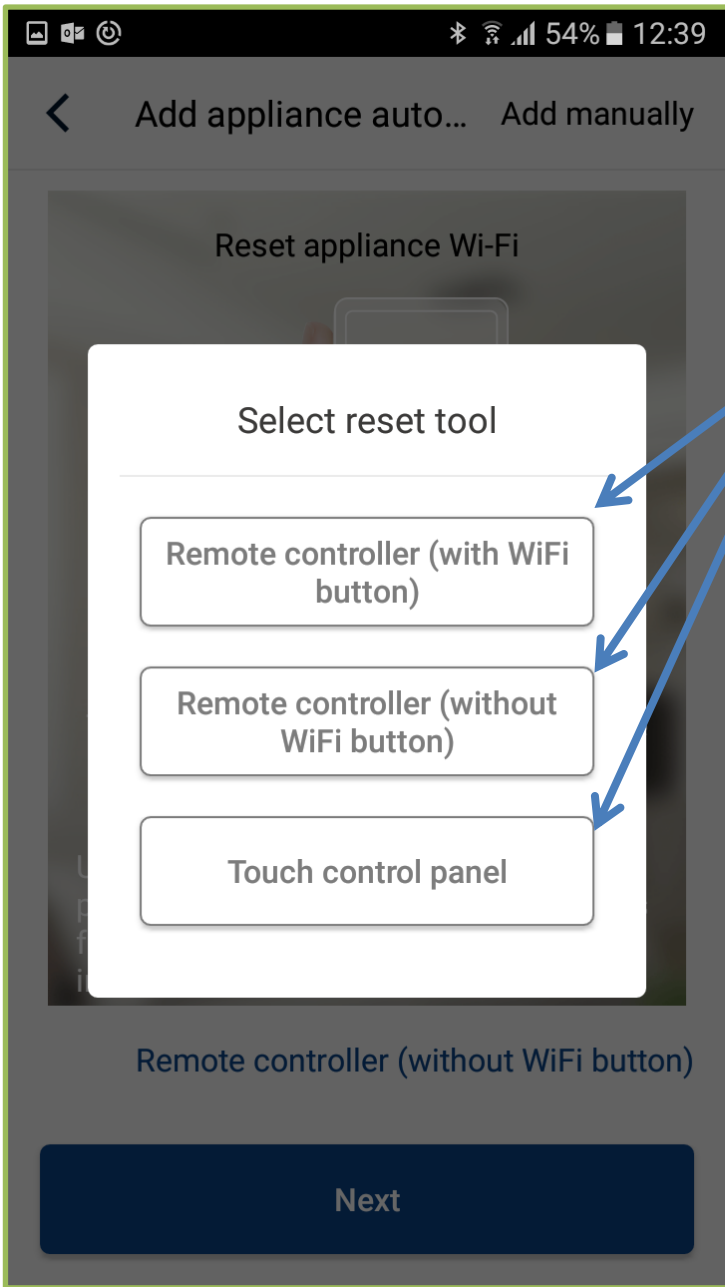
or

Sign in with Username/Email & Password if already registered as User

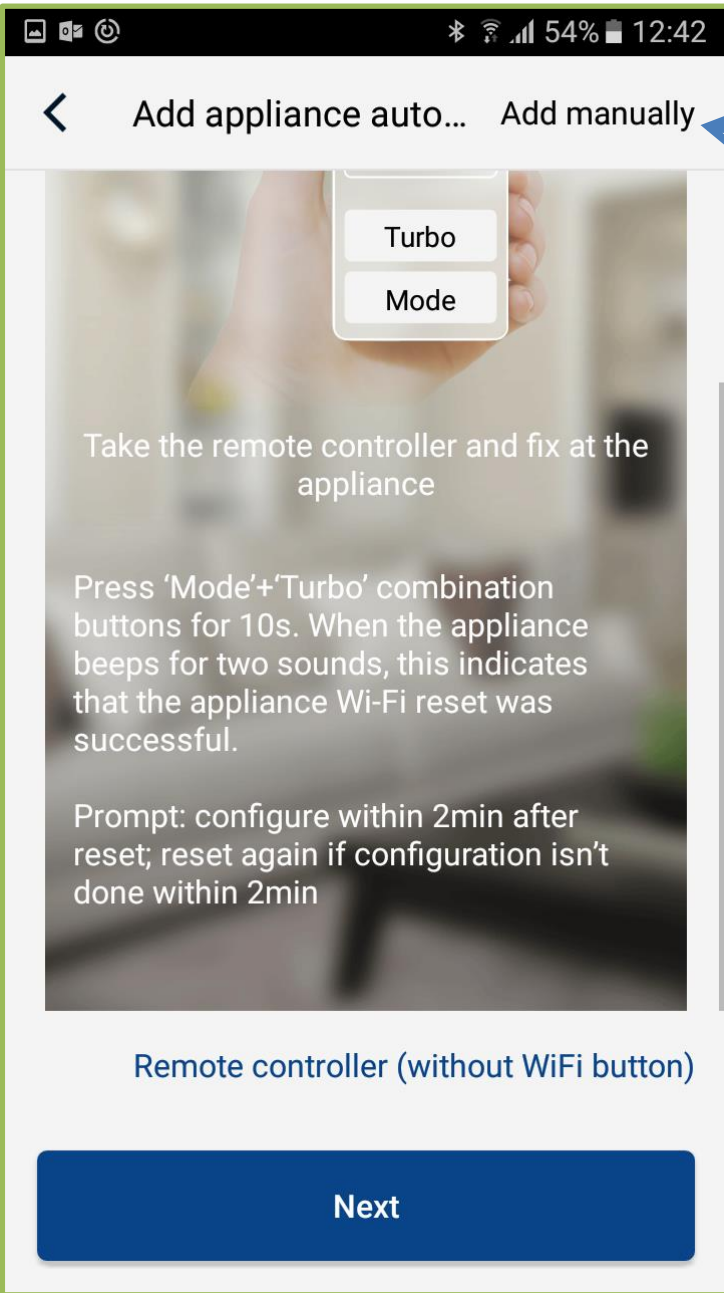
or

Sign in with Facebook Account





Check which type of Remote you have & click on the Tab accordingly



Click on 'Add manually'

Add appliance manually

Add appliance manually

Step 1

Open appliance WiFi

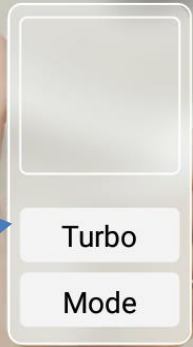
Press
Wifi & Mode buttons for 1 sec
Simultaneously

Open appliance WiFi



or

Press
Turbo and Mode buttons for 10 sec
Simultaneously



Take the remote controller and fix at the appliance

Take the remote controller and fix at the appliance

Step 2

Under remote controller off status, 'Mode'+ 'WiFi' combination buttons for 1s. When the appliance beeps, pull out the appliance plug after 5s and then

After 5 sec turn Off from power supply (double pole switch) & Turn On from power after 3 sec

'Mode'+ 'Turbo' combination for 10s. When the appliance beeps for two sounds, pull out the appliance plug after 5s and then reinsert

Remote controller (with WiFi button)

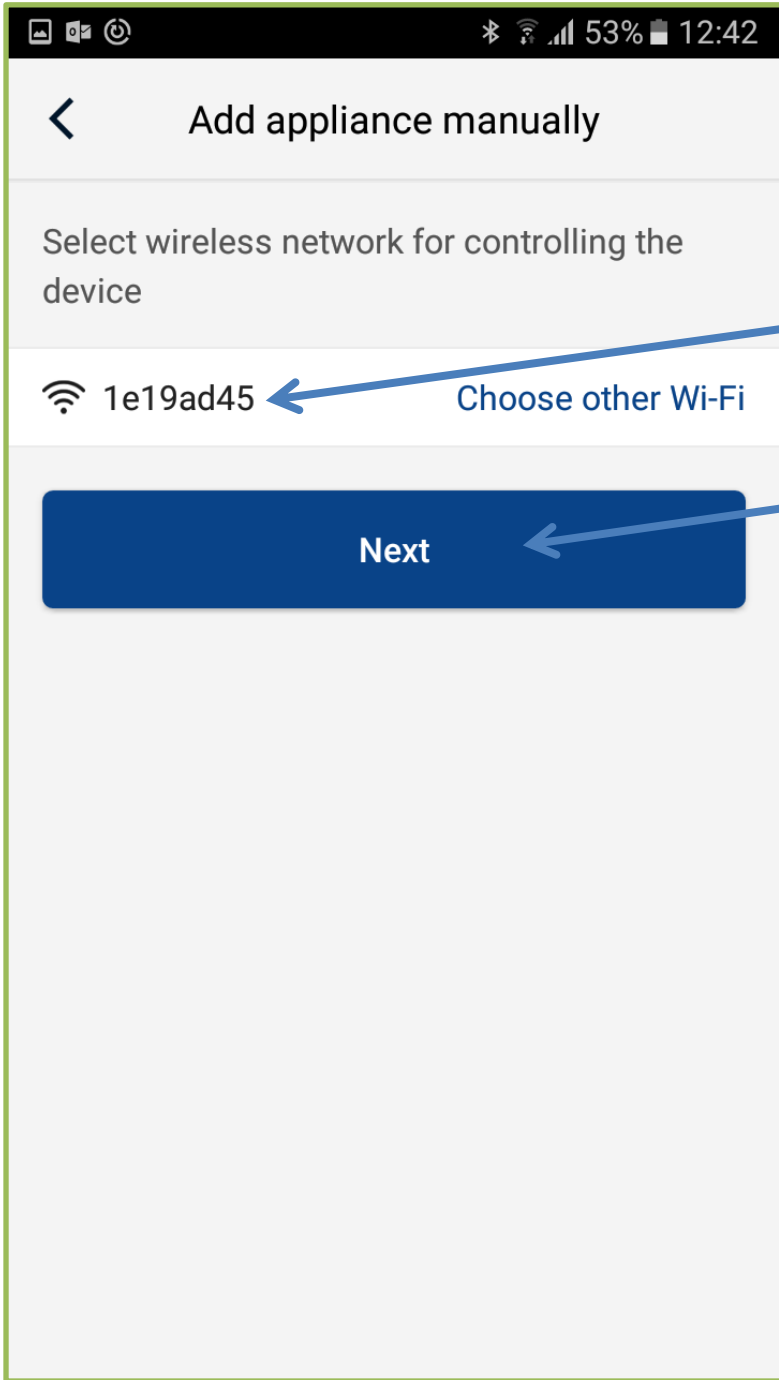
Remote controller (without WiFi button)

Step 3

Click Next

Next

Next



For Android Devices
(find iOS steps in next pages)

Wifi mac address will appear after few sec from
Reset of Power Supply (Please wait until it shows)

Click Next

12:42 53% 5GHz Wi-Fi is not supported

Add appliance manually

Please select your home wireless router(5GHz Wi-Fi is not supported)

BTMain [Choose other Wi-Fi](#)

.....

Memorize the password

Submit

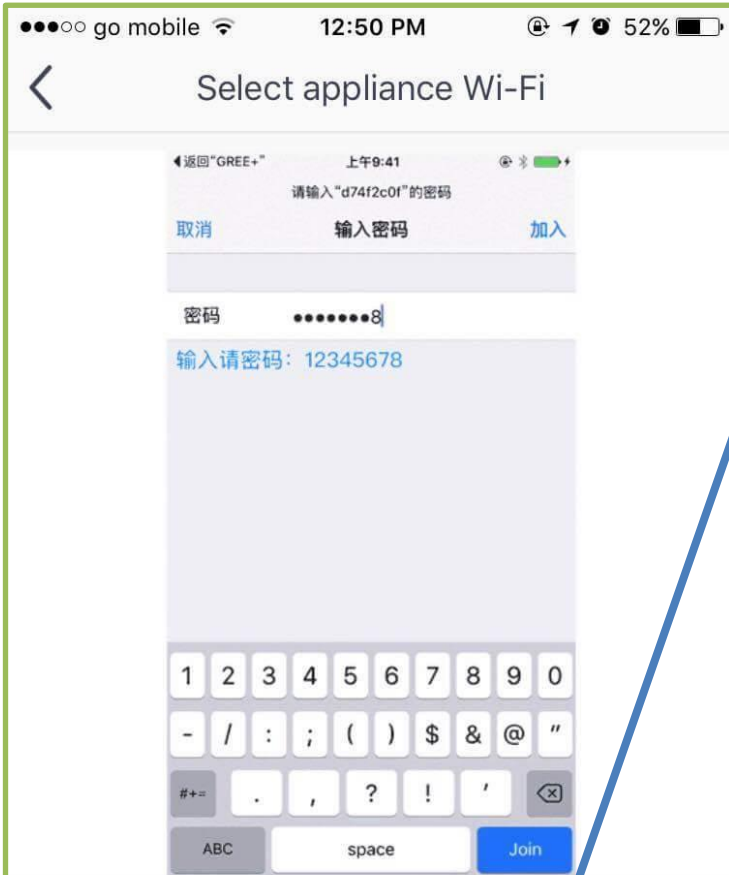
Choose Home Wifi or other Wifi Networks and Input Password
N.B Make sure you stay connected to the same Wifi Network until Configuration is complete

Click on Submit

For iOS Devices

Step 1

Click Next

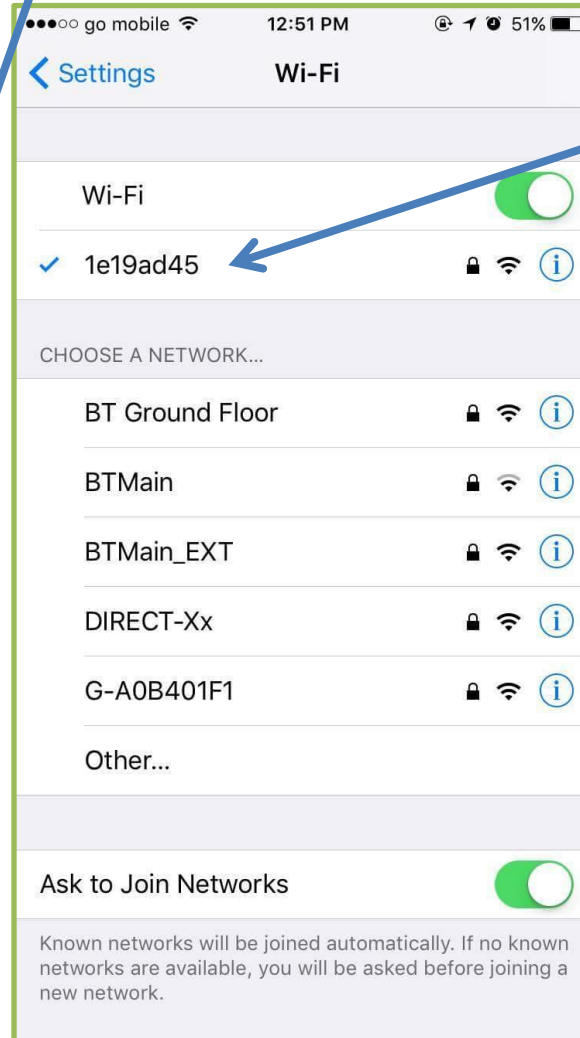


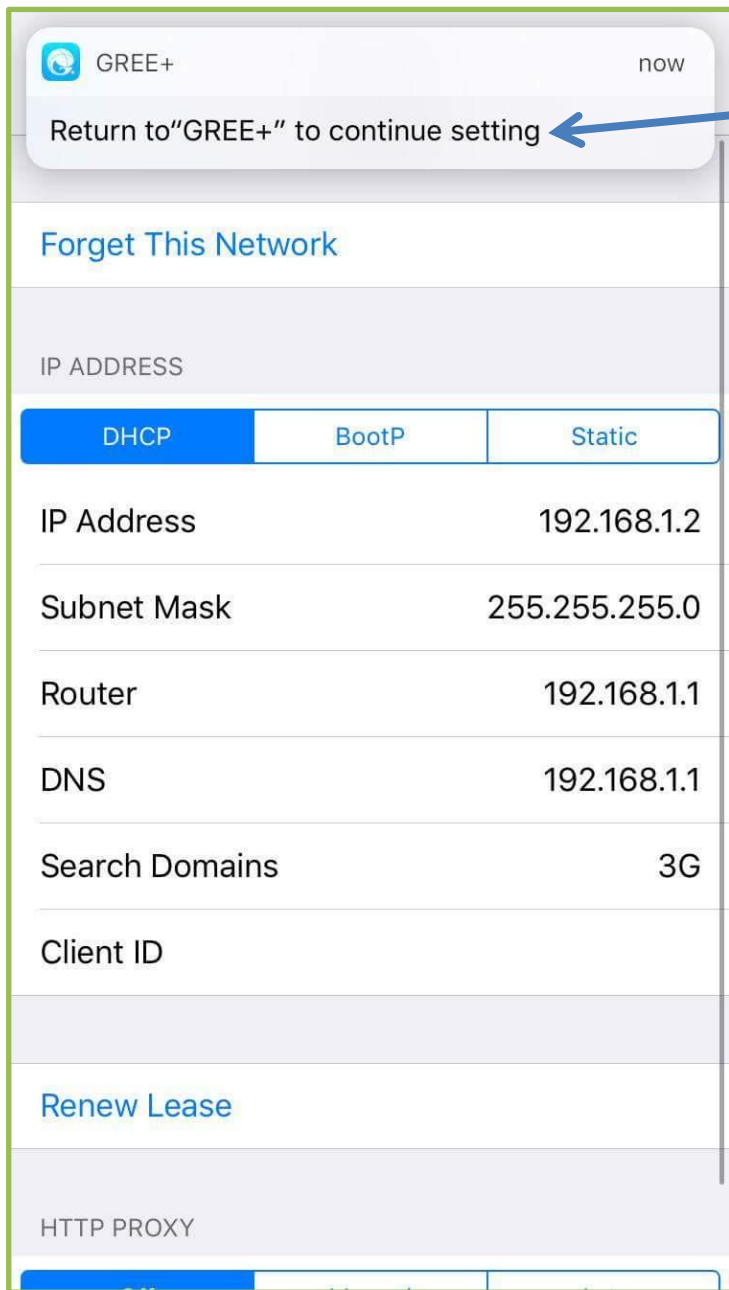
Connect mobile WiFi to xxxxxxxx (password: 12345678) and then turn back

Next

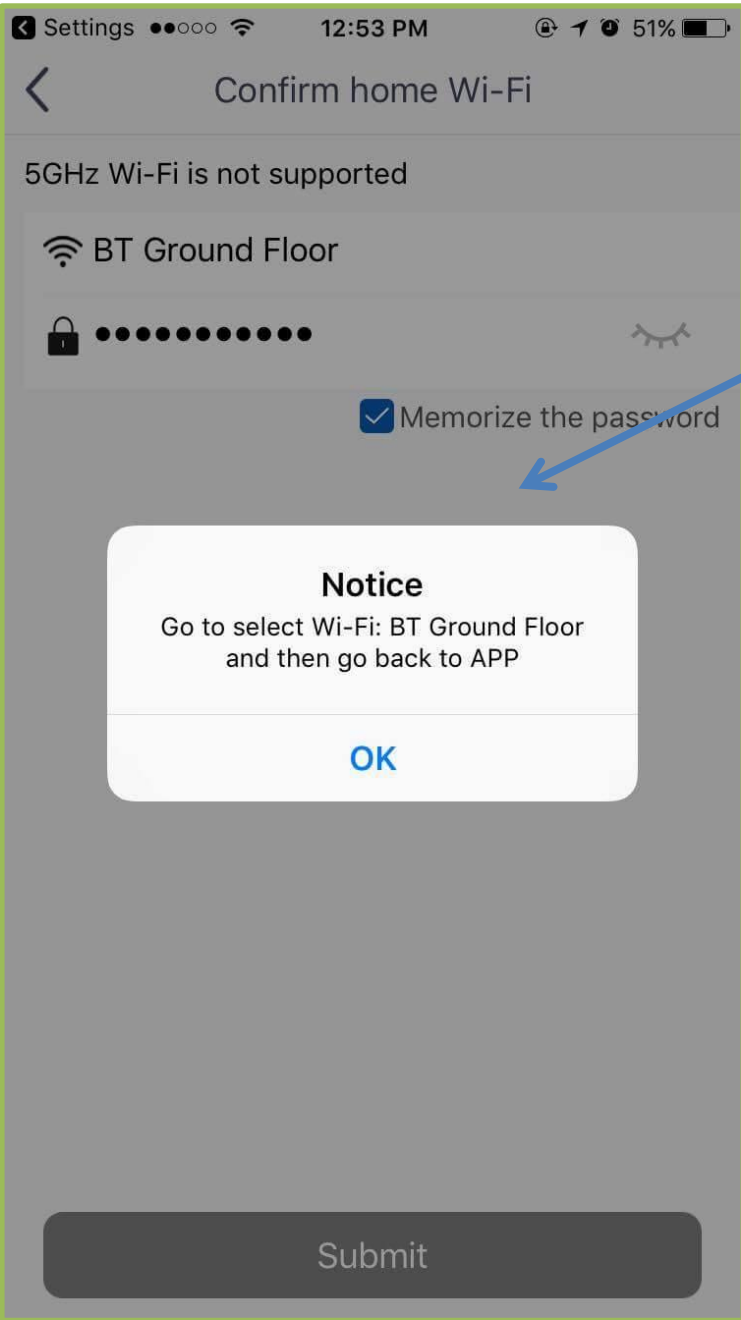
Step 2

Click on the Wifi Module mac Address of Appliance i.e. 1e19ad45 And input password default 12345678

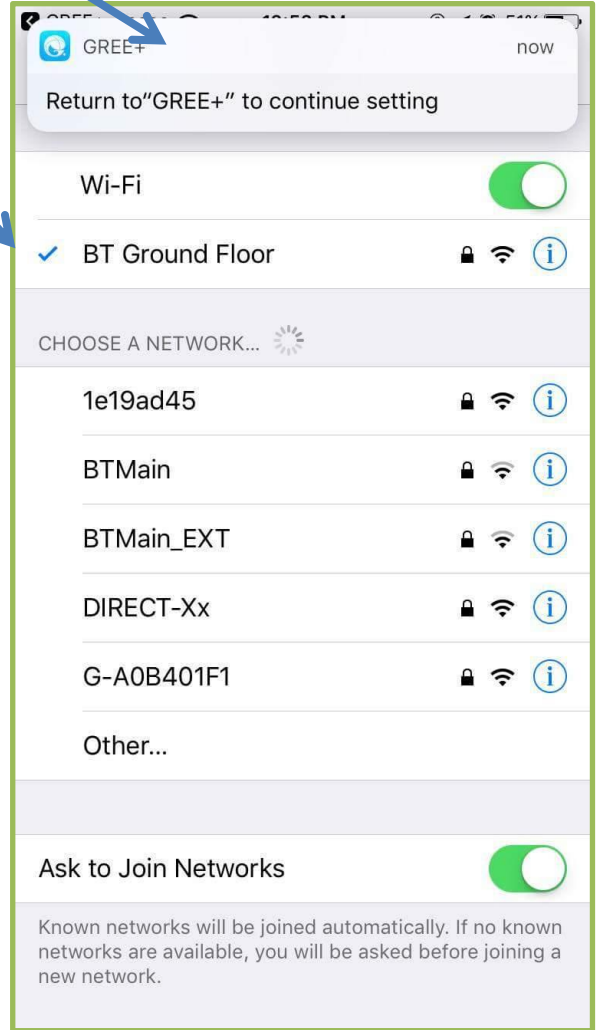


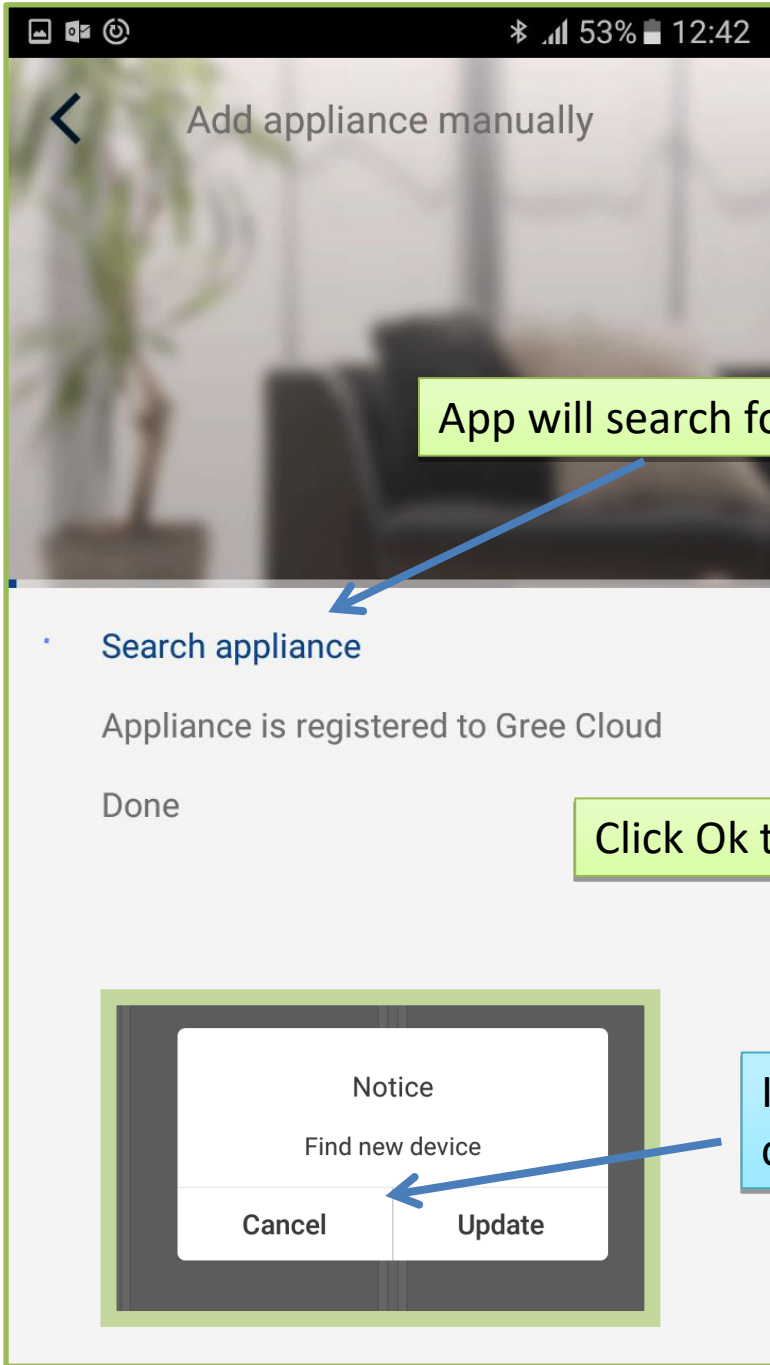


When window pops up please click this Tab to Return to App configuration



Next Step is to Select Home Wifi or any Network Connection. Input Password and return to App GREE+

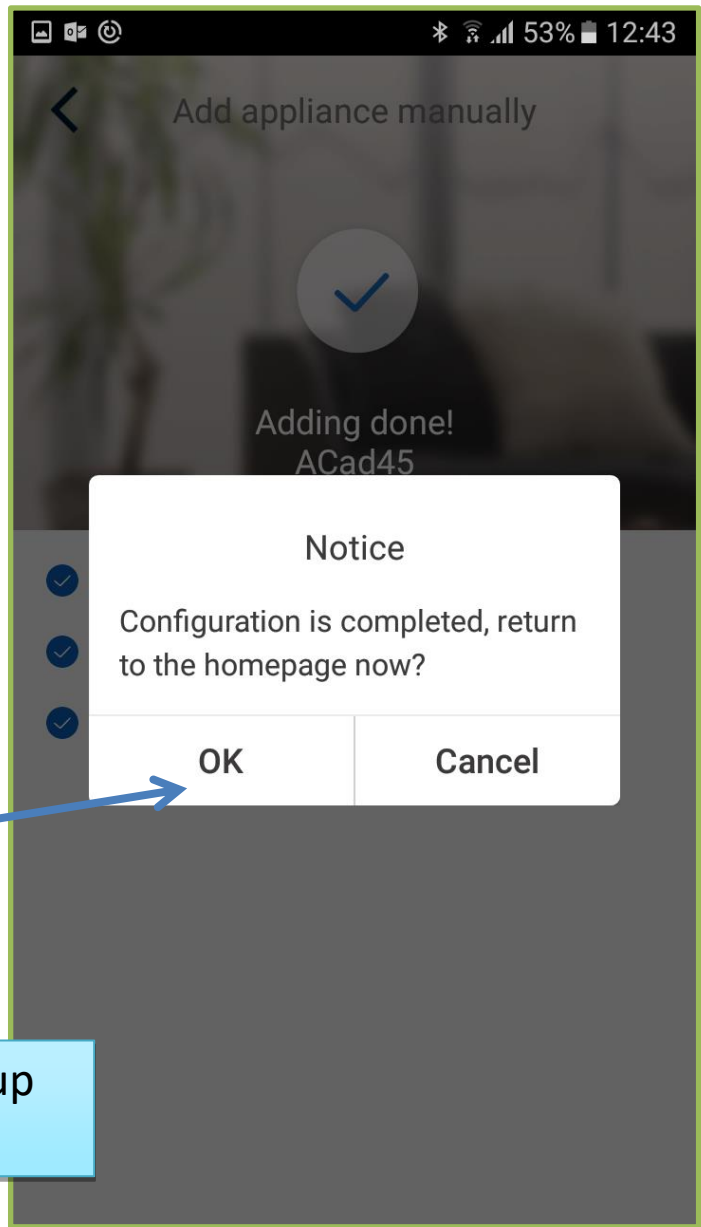


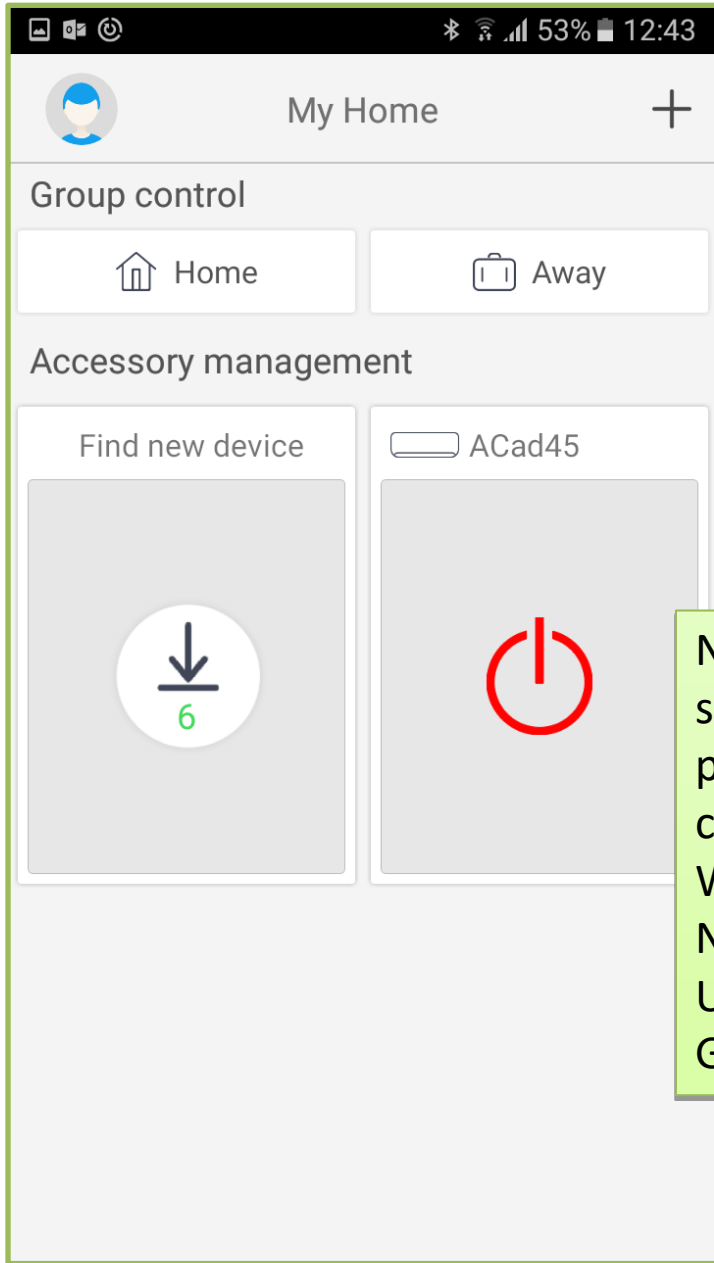


App will search for Appliance

Click Ok to start App

If window pops up click on Cancel





You can now easily control Settings of A/C while Indoors or Outdoors

N.B To access Appliance settings from Outdoors please make sure to connect to Good Signal Wifi Network or 3G/4G Network & Sign In with User Name & Password in Gree Cloud

